

Innovative pressure regulation systems offers multiple advantages



Even though electrification is on the rise, LPG was, is and will remain a form of energy essential for campers in the foreseeable future – especially when it comes to self-sufficiency. And if an LPG system is on board, this usually indicates the presence of high-quality manufacturer GOK. Products from the German family-owned company can be found between the gas cylinder and the gas device; the centrepiece is the gas pressure regulator, of which there will be an innovative development from April 2024

Words editorial staff

The headquarters of GOK aren't that easy to find. While the company buildings of many such businesses are traditionally situated in industrial areas, those of GOK are surrounded by residential buildings, idyllic woodland and a stream. The office buildings and some of the production halls are covered by trees. Unless you look closely, it's easy to drive past the access road to GOK's premises.

Just like the LPG system in a motor caravan, the company headquarters are somewhat hidden from view. And although GOK products can now be found in many a caravan, motor home or motor caravan, some people are yet to have heard of the family business from the northern part of Bavaria. *"This is now changing, though, especially in the last five to six years,"* explains Andreas Brohm, Technical Managing Director of the LPG specialist. Thanks to a number of successful measures,





Andreas Brohm



GOK now has an increasing presence in the industry, and word is spreading about the advantages of GOK products, reports Andreas Brohm.

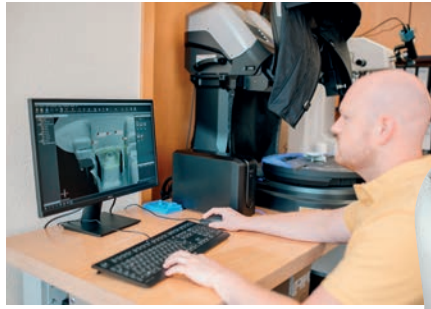
Why choose GOK

GOK offers a full range of products covering everything from gas cylinders to end devices: whether it's a hose assembly, a quick-acting stop valve, an adapter, a test device or the aforementioned gas pressure regulator – and in most cases, GOK offers several variants. GOK has been manufacturing at its Marktbreit site in Germany ever since it was founded in 1968. The design, development, purchasing, sales, production and assembly divisions are all under one roof. And that is also an important part of the company's philosophy: as a manufacturer of safety-relevant components, product quality is always of paramount importance at GOK. *"The more processing steps we have in one place, the more control we have over the quality of our products,"* explains Andreas Brohm.

100-percent inspection

And that's also the reason why GOK has its own foundry, including the associated metalworking and toolmaking workshops. It is here that the housings for the pressure regulation systems with crash sensor are cast, for example. In addition, GOK has its own mechanical production plant in which turned and milled parts are manufactured from metallic raw materials. The company's semi-finished products and components are also assembled into finished products at the Marktbreit location. Before the finished products proceed to the shipping warehouse, however, they have usually passed

Testing and inspection procedures



through multiple inspection steps. These include the incoming goods inspection, the in-depth material inspection for in-house and third-party products, quality inspections before and after the assembly of semi-finished products as well as a final inspection. As Andreas Brohm explains: *"We follow a 100-percent inspection strategy for all relevant products, which includes all gas pressure regulators. This means that every gas pressure regulator is checked to ensure that it functions correctly and is free of leaks."*

This also applies to the latest development from GOK: the gas pressure regulators in the Caramatic SafeDrive series. This is a pressure regulation system that also allows the LPG system to be operated while driving with the camping vehicle. Safety is ensured by a crash sensor, which stops the gas flow if the vehicle is involved in an accident. This reliably prevents unburnt LPG from escaping.

Advantages of the Caramatic SafeDrive

People will argue that systems with crash sensors have been around for a long time – including from GOK. And although that is true, the Caramatic SafeDrive is still something special. In contrast to other systems, such as the DriveOne or DriveTwo with crash sensor from GOK, the Caramatic SafeDrive and its crash sensor are mounted directly on the gas cylinder. This has several advantages:

- Assembly is extremely simple and very quick.
- The assembly options are significantly more flexible than with comparable systems, which means more options are available in the case of small gas cylinder cases.



Above:
SafeDrive PLUS
with gas cylinders

- The crash sensor secures the entire pipe system between the gas cylinder and the end device.
- The configuration of the system makes gas filters and excess flow devices unnecessary.

To suit different requirements, the Caramatic SafeDrive is available for single-cylinder systems while the Caramatic SafeDrive PLUS is provided for two-cylinder systems. If only one cylinder is used, the Caramatic SafeDrive is screwed directly onto the gas cylinder valve and the gas hose is connected to the fixed piping system in the vehicle. In the case of the Caramatic SafeDrive PLUS for two-cylinder systems, a central and changeover regulator is fixed to the two gas cylinders. These two regulators are connected to each other via a hose assembly, and an additional hose connection is provided for connecting to the piping system in the leisure vehicle. It is therefore possible to switch automatically between two gas cylinders and to change the empty cylinder without having to interrupt the ongoing operations.

More variety

"It goes without saying that the Caramatic DriveOne and DriveTwo with crash sensor continue to be part of our product range," emphasises Andreas Brohm. The Caramatic SafeDrive isn't a direct replacement product for the tried-and-tested wall assembly systems, but instead enhances the options available to vehicle manufacturers and campers.

The variety on offer in the product range continues to grow. And while the company headquarters may remain well concealed, the high-quality products from GOK are becoming accessible to an ever-increasing number of people in the camping industry. The Caramatic SafeDrive will play no small part in this development.

Caramatic SafeDrive PLUS

