

CTA, company at the forefront on safety

At the Caravan Salon Düsseldorf 2014 the CTA will be present for the second year with a larger stand. In Germany, manufacturers and end users will be able to observe closely all the features and benefits of the new versions of seat swivels, systems for seat belts, TV brackets, luggage racks and ladders, designed and built entirely by the CTA under the new European regulations.

Considering the great success of the new trivalent profile presented at the beginning of the year, CTA repropose this important accessory with which you can get multiple applications inside the motorhome.

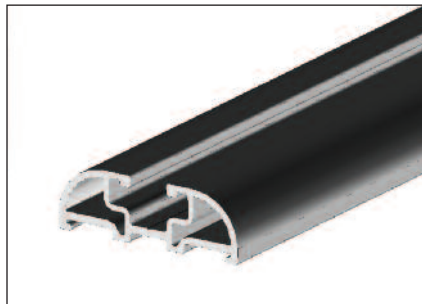
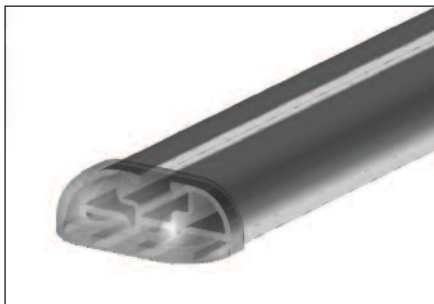
The new fastener is the perfect combination between design and the multiple applications that can be made inside an RV.

The new fasteners are made of anodized aluminum, with protective covers at both ends, guaranteeing great mechanical resistance due to its internal geometry.

The fastener can be secured with screws on a central axis from the outside, making it a perfect for aftermarket sales and installation or the manufacturer can secure it on the inside of the vehicle, thus making the fastening screws invisible. The great advantage to manufacturers lies in that the same fastener can be installed in three different applications, for TV brackets, luggage racks or as a motorcycle anchoring device. For the first application, the fastener is screwed into the interior wall with special screws included in the kit. Along the central axis, the TV bracket can be moved vertically until finding the desired position for the end user. For the second application, the tracks can be placed as a luggage rack. The modern automotive design is modern and refined and adaptable to all the latest RV models.



Thanks to the modular structure of the CTA luggage rack, this is extremely versatile and allows for multiple configurations to fit the available roof space and needs of campers. This modular configuration represents the evolution of previous models and offers further fastening systems.



CTA & Partners Service

For over 30 years CTA has dedicated itself to designing components for safety belt installation, which adapt to the interiors of some of the world's best known automobile manufacturers such as: Iveco, Fiat, Renault, Citroen, Peugeot and Mercedes-Benz.

The front end and anti movement structures developed by the technical offices of CTA provide the maximum level of versatility with over 2,500 different applications and compatibility with the Truma, Combi, Webasto and Alde heating systems. All structures are certified according to the 2005 41/CE standards and the R14 updates and some in accordance with the N2 adaptations.

Thanks to the important know how acquired over 35 years of business, CTA has been able to create the perfect technical synergy with all its customers that need to adapt the seat belt anchoring technology to their vehicles, achieving four main goals:

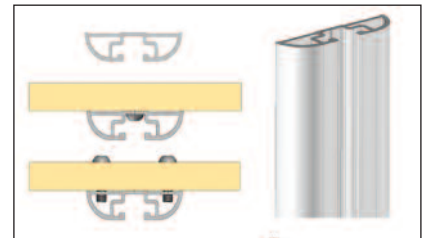
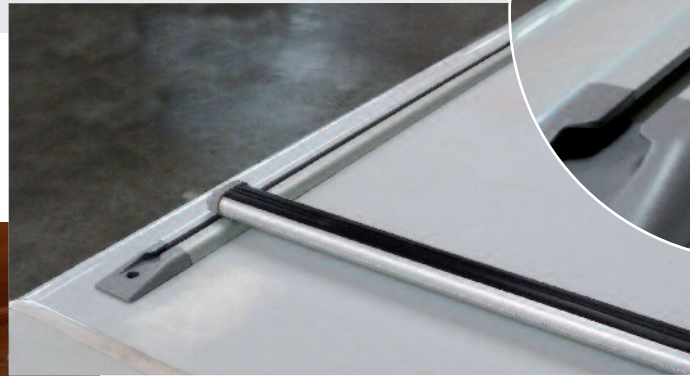
- 1) Zero design costs for adaptation.
- 2) Reduced times for development and installation of designs.
- 3) Large selection of seat belt anchoring systems that allows selection of the most appropriate for the builder's needs.
- 4) Compact packaging systems which facilitates shipping and storage of product.

LCD Bracket

The constant increase in demand for flat screen televisions in the recreational vehicle market has generated additional comforts for the modern campers; however, technology had to catch up with this new trend. CTA Srl has come up with a light weight, very solid, easy to install LCD bracket which has given it an advantage in the market. They are manufactured in stainless steel, with the majority of the moving parts insulated with a special material to minimize friction between metal components, which allows the television monitor to be positioned in a simple and fluid way, which reduces unnecessary manual operations. The CTA catalogue includes a wide gamut of LCD Brackets, with over 30 models, which can accommodate the largest and heaviest loads securely.

The latest innovation in these accessories allows the user to easily disconnect and move the monitor to different locations in the motor home. This revolutionary and versatile feature is called "QUICK FIXING" and allows the monitor to be easily moved from the bedroom to the living room or veranda in seconds. It is possible to move the screen inside the home, after the vacation is over without the use of any tools, perhaps placing it in the children's bedroom at home, or any other room of the house. The LCD brackets adjust to any configuration in the interior of the motor home offering many different options such as: revolving wall mount, sliding, ceiling with sliding plan, ceiling mount with guides, table mounting with vertical sliding and many more.

bedroom at home, or any other room of the house. The LCD brackets adjust to any configuration in the interior of the motor home offering many different options such as: revolving wall mount, sliding, ceiling with sliding plan, ceiling mount with guides, table mounting with vertical sliding and many more.



The third application that CTA offers for the first time is the ability to use the kit as a motorcycle anchoring system by installation on the floor or wall of a garage. This profile works with special tie-downs that can be applied directly to the guide, without forcing the camper do this from the ends of the profile to add anchor points between the rings that are already in place. This advantage ensures the safety of the bike also for closing the tie-down to soften.

The same tie-down rings allows for the passage of cables, elastic springs or nuts needed to adjust the bracket on the rail system with sliding adjustable positioning, by pressing lightly on it.

Company Profile

CTA Srl has 35 years experience in the automotive market, much of which was dedicated to converting vehicles and manufacturing special order metal structures of various types. Its main customer base is automobile manufacturers who require design work, out sourcing manufacturing, or post-sales assistance. The vast experience and organizational capacity of the company has propelled its rapid growth. The technical design team has conducted many innovative studies to meet the needs of its customers for technological advances.