

Performing the evolution, growing year after year

CTA has grown up strong of four decades of experience in the OEM automotive sector. Set up and managed by a young and professional team, able to satisfy the different needs required by the firms of the sector.

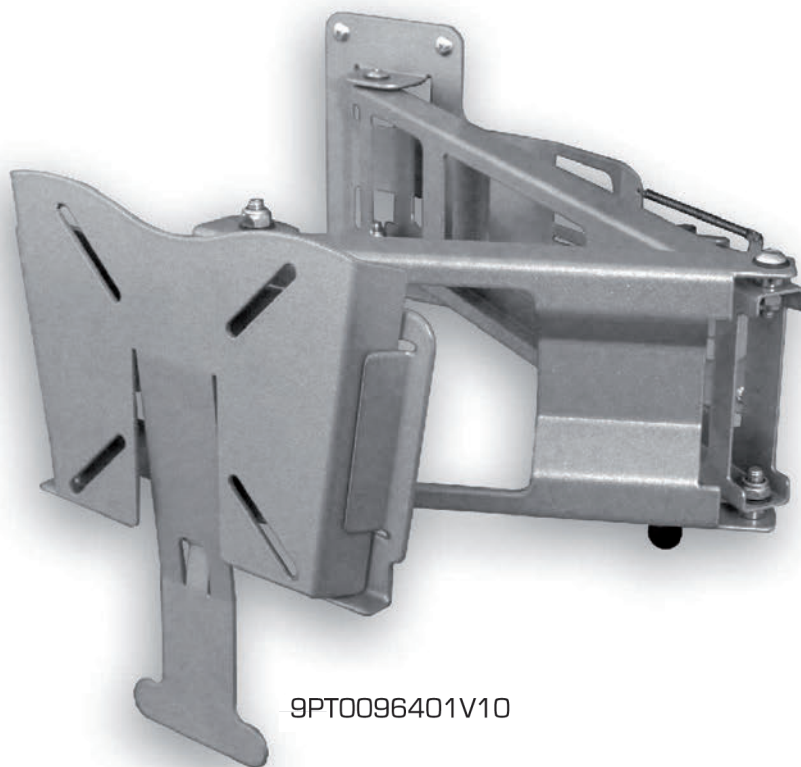
Words Giorgio Carpi



9PT0002800V10



CPTV01



9PT0096401V10

CTA is a leading player in the LCD TV stands industry. Its products boast proven lightness, robustness, ease of use and low cost. Made of powder-coated, high tensile steel, most of the products feature a soft mechanism obtained by the inclusion of special films between the metal parts, which enable a quick placement of the monitors in a simple and smooth fashion. The lock system of TV holders has been re-engineered. The new mechanic lock is very strong and keeps the support safe from opening while the

vehicle is moving. Some of the structural features have also been improved: vibrations are lower than previous models and the clearance between mobile components has been optimized as well as the friction system. Only a few models still use the manual lock system to hold the bracket in open position but most of CTA TV supports don't need it anymore. The biggest innovation comes from the locking system: it only takes a soft push to the support into locked position to have it fixed by a simple click.



9PG0006000V01



9PG0005600V01



9PG0060000V01

CTA over seat swivels consist of the particular work undertaken on the metal sheet of 2 mm contoured against the 3-8 mm of other models on the market. This is a great advantage that allows the containment of the weight of the final product that is approximately around 7 kilos. In order to ensure guarantee the maximum versatility, CTA plates can be utilized either on the seat of the driver or passenger, allowing optimization of the warehouse stocks of the builders and raising the level of comfort for campers. A special release lever allows the rotation of the plates and seats. Moreover, given that modern seats all have at least one point of anchorage of the seat belts, the plates are approved based on relative resistance tests of the restraint devices.

CTA was the first company in Italy introducing on the market safetybelt structures with a weight reduction up to 40% lighter in weight compared to the products currently available. The Italian company achieved this extraordinary result thanks to special, high resistance metal alloys combined with a simplified installation system through two or four anchorages, thereby reducing installation costs as a whole. The front end and anti movement structures developed by the technical offices of CTA provide the maximum level of versatility with over 10,000 different applications and compatibility with the Truma Combi, Webasto and Alde heating systems. CTA has developed the integrated "Isofix" seat, designing a unified structure that can be used with either a universal or semi-universal seat.

